



DIplomacy
ON THE
ROCKS

ROCKY OUTCROPPINGS FROM
THE SOUTH CHINA SEA TO THE ARCTIC:
DISPUTES AND SOLUTIONS

Friday April 10, 2015 / 9am - 5pm

JOUKOWSKY FORUM

THE WATSON INSTITUTE FOR INTERNATIONAL STUDIES

BROWN UNIVERSITY



WATSON INSTITUTE
BROWN UNIVERSITY



Over the past few decades more and more disputes have emerged between nations over the status and resources of rocky outcroppings around the world. While defined by the Law of the Sea treaty, these claims rest on a myriad of factors including history, ancient maps, hydrocarbons, fishing rights, traditional law, strategy and military moves. As Arctic sea ice reaches its lowest levels, the competition is moving north as well. This workshop will bring together academic experts, diplomats and students from a variety of disciplines and backgrounds, from law to environment to diplomacy, in order to look at the origins of the disputes and how some have been solved.

THE WATSON INSTITUTE



WATSON INSTITUTE
BROWN UNIVERSITY

The Watson Institute for International Studies at Brown University seeks to promote a just and peaceful world through research, teaching, and public engagement. The Watson Institute is a community of scholars whose work aims to help us understand and address the world's great challenges, such as globalization, economic uncertainty, security threats, environmental degradation, and poverty. Focusing on three main areas – development, security, and governance – the Institute leverages Brown's tradition of true interdisciplinarity to foster innovative, policy-relevant scholarly activities. From Latin America to China, from the Middle East to Southeast Asia, the strongest theoretical models emerge through observations in the field.

Registration, Coffee and Continental Breakfast 8:15am to 9am

Opening Session

9:00am to 9:30am



Welcoming Remarks

Richard Locke

HOWARD R. SWEARER DIRECTOR, WATSON INSTITUTE FOR INTERNATIONAL STUDIES
BROWN UNIVERSITY



Framing the Main Issues

Richard Boucher

AMBASSADOR-IN-RESIDENCE, WATSON INSTITUTE FOR INTERNATIONAL STUDIES
BROWN UNIVERSITY



Remarks: Law of the Sea to Joint Development

James Kraska

PROFESSOR OF LAW, STOCKTON CENTER FOR THE STUDY OF INTERNATIONAL LAW
US NAVAL WAR COLLEGE

First Session: International Law from Claims to Outcomes

9:45am to 11am



Maritime Features in the Public Order of the Oceans

Charles Norchi

PROFESSOR OF LAW AND DIRECTOR, CENTER FOR OCEANS & COASTAL LAW
AND GRADUATE STUDIES PROGRAMS
UNIVERSITY OF MAINE



Philippines-China Arbitration Case at the Law of the Sea Tribunal

Carter Johnson

STUDENT '16, INTERNATIONAL RELATIONS
BROWN UNIVERSITY



On Thin Ice: The Arctic as a Common Property Resource

Caroline Karp

SENIOR LECTURER, INSTITUTE FOR ENVIRONMENT & SOCIETY
BROWN UNIVERSITY

Second Session: Negotiated Solutions

11:15am to 12:30pm



Edge Ice Boundaries and Rocks

Siri Veland

ASSISTANT PROFESSOR OF ENVIRONMENTAL STUDIES,
INSTITUTE FOR ENVIRONMENT & SOCIETY
BROWN UNIVERSITY



For Cod and Country: Building the Icelandic EEZ

Erlingur Erlingsson

DEPUTY CHIEF OF MISSION
EMBASSY OF ICELAND

Lunch & Keynote

12:30pm to 2:00pm

Peace Park: Thawing Arctic Tensions



Tess Carter

STUDENT '16
CHEMISTRY



Natalia Ginsburg

STUDENT '18
UNDECLARED



Meghan Holloway

STUDENT '16
HEALTH & HUMAN BIOLOGY AND ECONOMICS



Alan Gorchov Negron

STUDENT '17
GEOLOGY-BIOLOGY



Viraj Sikand

STUDENT '17.5
ENVIRONMENTAL SCIENCE



Catherine Willett

STUDENT '16.5
PHILOSOPHY

Third Session: South China Sea

2:15pm to 3:30pm



China and the South China Sea
Ambassador Chas W. Freeman, Jr. (USFS, Ret.)



History of Chinese Maps of the South China Sea
Aaron Vale
STUDENT '15, INTERNATIONAL RELATIONS
BROWN UNIVERSITY



ASEAN Perspective on the South China Sea
Kovit Talasophon
COMMANDER, ROYAL THAI NAVY
UNIVERSITY OF MAINE SCHOOL OF LAW



Malaysia-Thailand and Other Joint Development Areas
Liu Yi
STUDENT '15, INTERNATIONAL RELATIONS
BROWN UNIVERSITY

Fourth Session: The Arctic

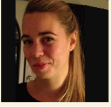
3:45pm to 4:30pm



Towards a Cooperative Maritime Strategy for the Arctic Region
Walter Berbrick
ASSOCIATE RESEARCH PROFESSOR, WAR GAMING
US NAVAL WAR COLLEGE



Diplomatic Vehicles in the Arctic: The Arctic Council and Beyond
Rebecca Pincus
VISITING PROFESSOR OF MARITIME POLICY, CENTER FOR ARCTIC STUDY AND POLICY
US COAST GUARD ACADEMY



Comment

Edwige Cavan

PH. D CANDIDATE, AMERICAN STUDIES
PARIS IV SORBONNE, PARIS, FRANCE

Wrap Up - Chaired by Richard Boucher

4:30pm to 5:00pm

RICHARD BOUCHER



Ambassador Boucher had a long and successful foreign service career in China, South Asia, Europe and as State Department Spokesman. He also promoted economic standards and practices in emerging markets for the OECD from 2009 to 2013. Since 2013, based on his diplomatic experience, he teaches courses on the practice of diplomacy at Brown and other universities.

SOPHIE PURDOM



Sophie is a Junior at Brown University where she studies Environmental Economics and conducts research with Richard Boucher. Her involvement with climate change issues span participating in the U.N. climate negotiations in Peru and Poland, writing legislation for Rhode Island's first climate law, and investing in environmental solutions with the Brown Investment Office. Sophie will continue exploring business perspectives this summer at Bain & Company.



WATSON INSTITUTE
BROWN UNIVERSITY