

RECONCEPTUALIZING FOREIGN AID DETERMINATION:

The Influence of Migration on German and French Aid
Allocation to Morocco



Sarah Stillman

Research Question:

What factors affect aid allocation?

Specifically, to what extent does migration affect foreign aid allocation?

Intellectual Context:

DEBATING THE DETERMINANTS OF FOREIGN AID

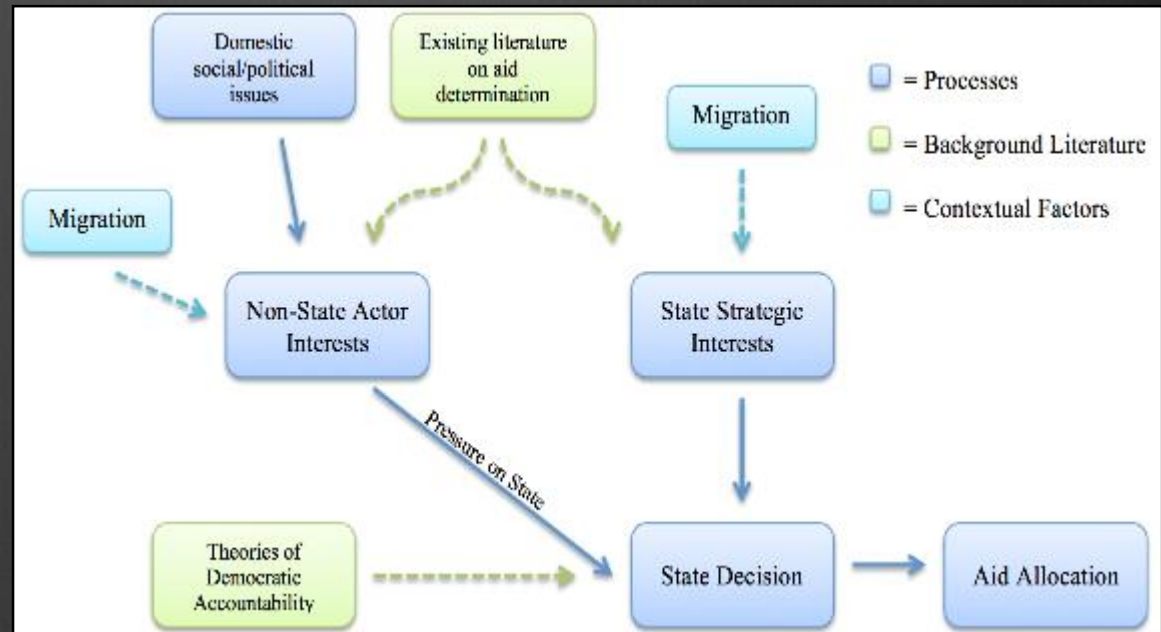
- ❖ Foreign policy and state interests
- ❖ Economic development of donor countries
- ❖ Humanitarianism and moral alignment
- ❖ Interests of non-state actors in donor countries

My Argument: A DYNAMIC MODEL OF AID ALLOCATION

❖ Reconceptualizing aid determination

❖ Accounts for:

- ❖ Context
- ❖ Temporality
- ❖ Dynamic-ness
- ❖ **Public Opinion**



So What?

THEORETICAL

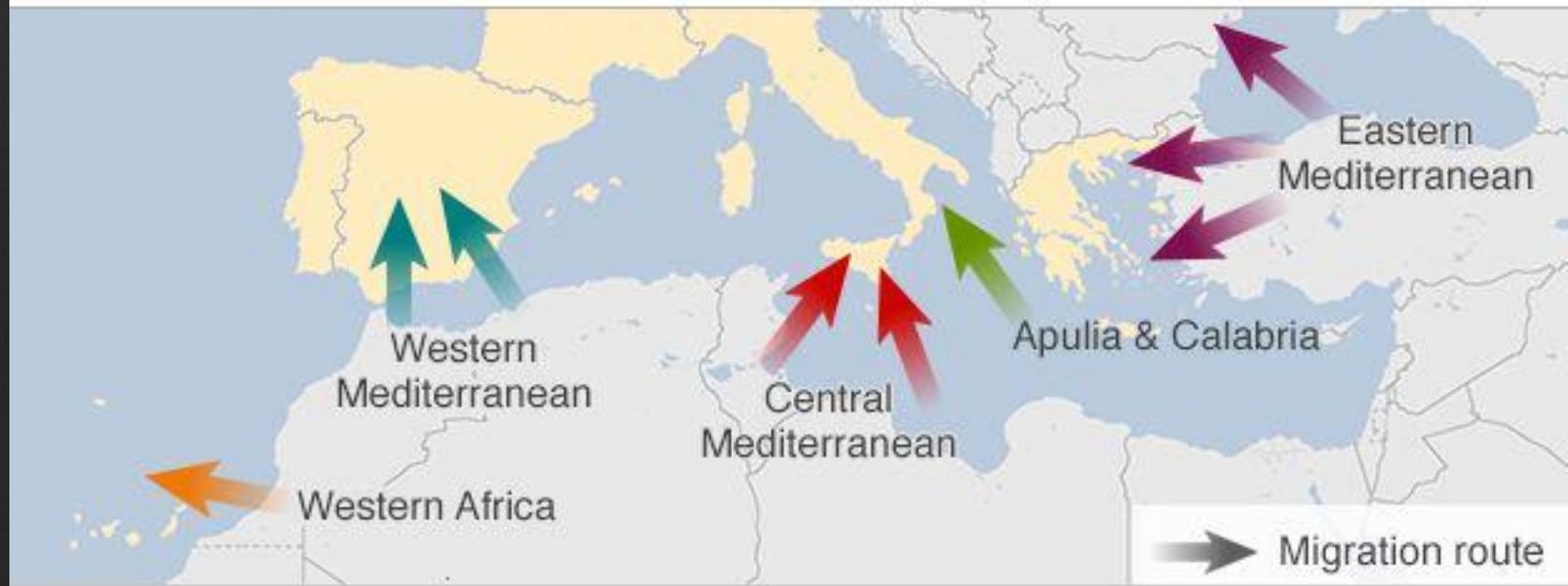
- ❖ Reconceptualizing the aid determination process
- ❖ Introducing a new element: migration
- ❖ Contributing empirical research to the study of French and German aid allocation

PRACTICAL

- ❖ Motives influence effectiveness of policies
- ❖ International migration flows are increasing, particularly to Europe
- ❖ Aid policies have life and death consequences for both migrants and aid recipients

Research Design: CASE SELECTION

Mediterranean migrant routes



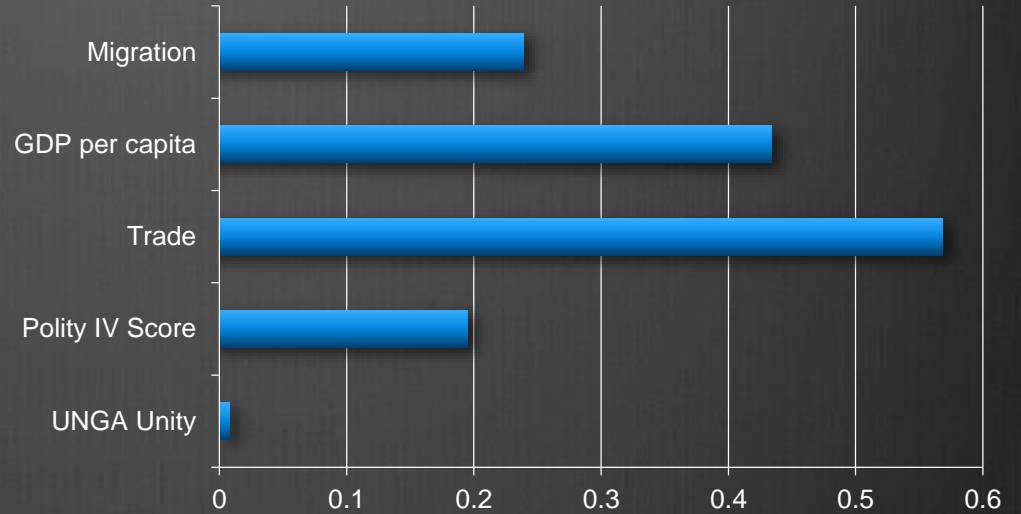
Research Design:

METHODS

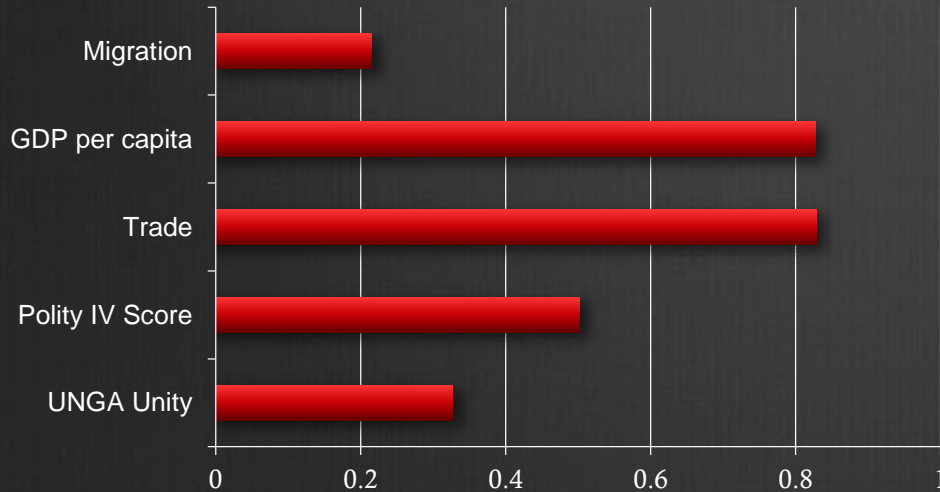
- ❖ Mixed-methods approach
 - ❖ Analysis of official agreements
 - ❖ Multivariate regression analysis of aid determinants
 - ❖ Content analysis of newspapers
 - ❖ Analysis of values surveys and public opinion polls

Findings: CORRELATIONS

Correlation of German Aid to Morocco and Aid's Determinants

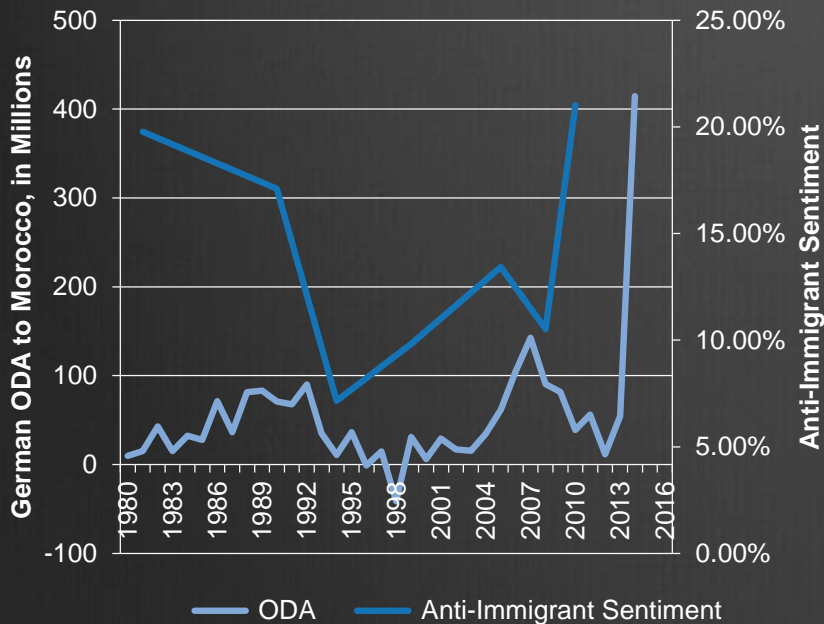


Correlation of French Aid to Morocco And Aid's Determinants

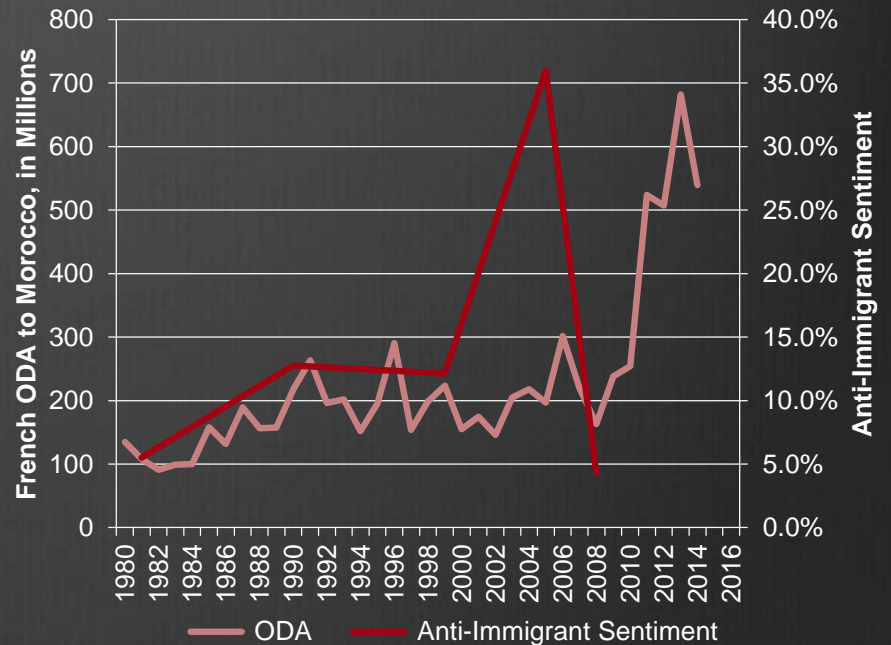


Findings: VALUES SURVEYS

ODA to Morocco and Anti-Immigrant Sentiment Germany

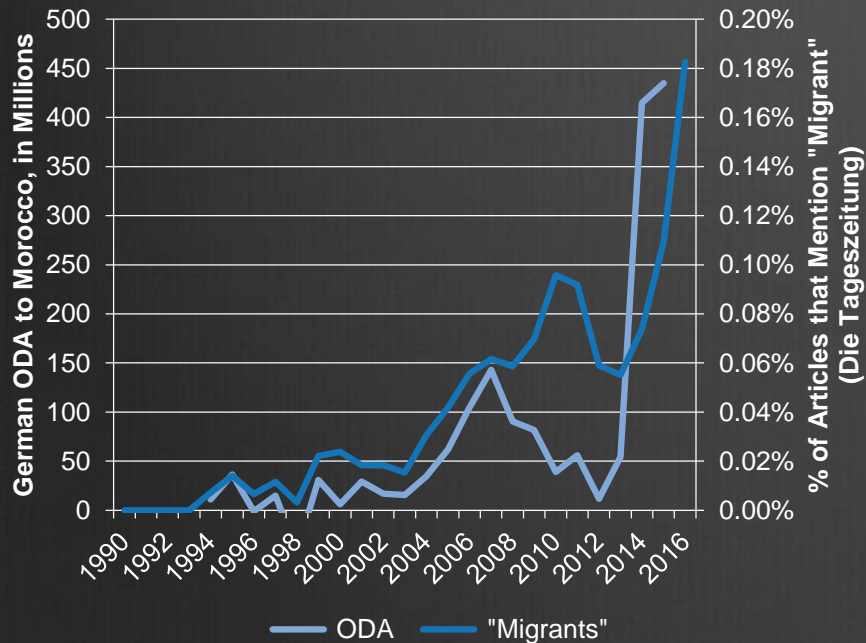


France

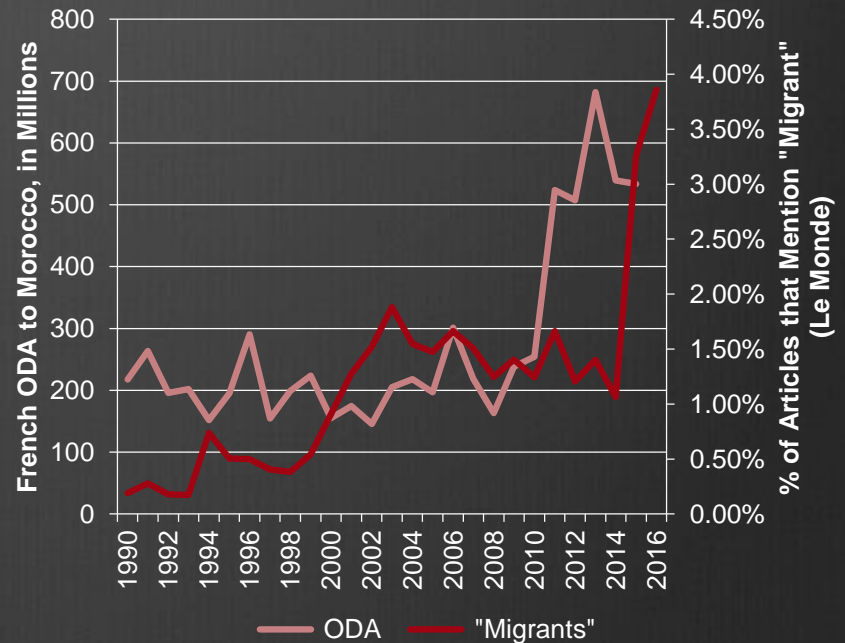


Findings: NEWSPAPERS

Trends in Foreign Aid and Mentions of "Migrant" Germany



France



Findings

- ❖ *Migration is not statistically significant in either case*
- ❖ *Aid in both the German and French cases is determined by not one, but multiple factors*
- ❖ *In Germany there is a strong positive correlation between migration figures and foreign aid throughout the entire period of analysis, which is particularly strong from 2010-2015.*
- ❖ *In France, there is not a strong correlation between migration figures and foreign aid, nor does the trend in foreign aid track the trends of anti-immigrant sentiment.*

Conclusions and Implications

- ❖ Aid determination in democratic countries is based on a country's strategic interests and interests of non-state actors
 - ❖ Importance of public opinion
- ❖ Context matters
- ❖ Change over time
- ❖ Aid is erroneously targeted

