

Taubman Center for Public Policy
Brown University

Higher Education as an Anchor
Institution: Solving the Distressed Inner
City Neighborhood Problem

Henry Louis Taylor, Jr.
Department of Urban and Regional Studies
UB Center for Urban Studies
University at Buffalo
October 27, 2011

Three Parts of the Presentation

Getting the Entire University Involved
in Neighborhood Development

Developing a Focus on Specific
Neighborhoods

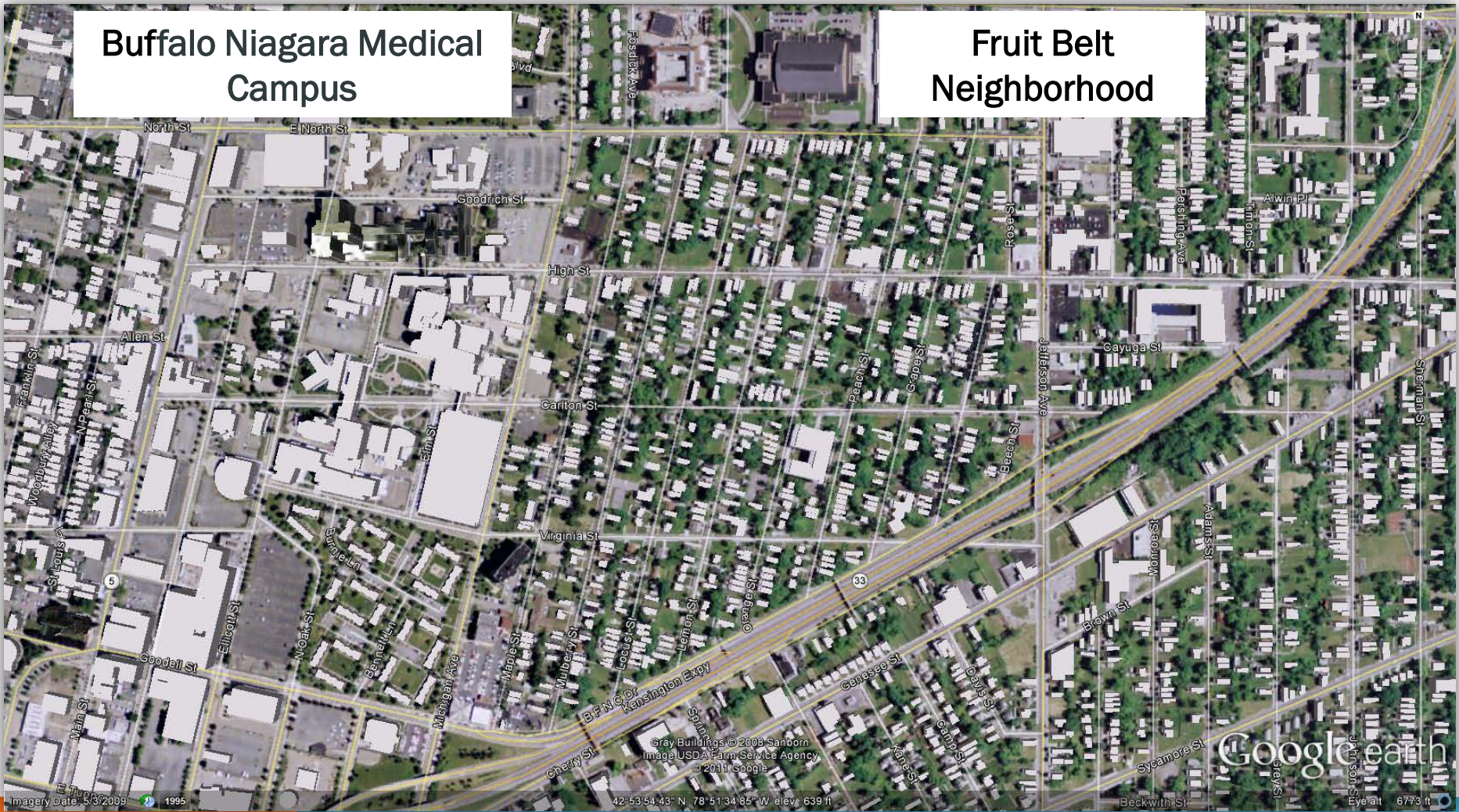
The Threat Posed by the
Entrepreneurial University

Part One: Getting the Entire University Involved



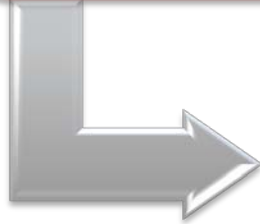
Buffalo Niagara Medical
Campus

Fruit Belt
Neighborhood



Many Eds and Meds are Located in the Inner City

11% in the Inner City



16% Rest of the Central City

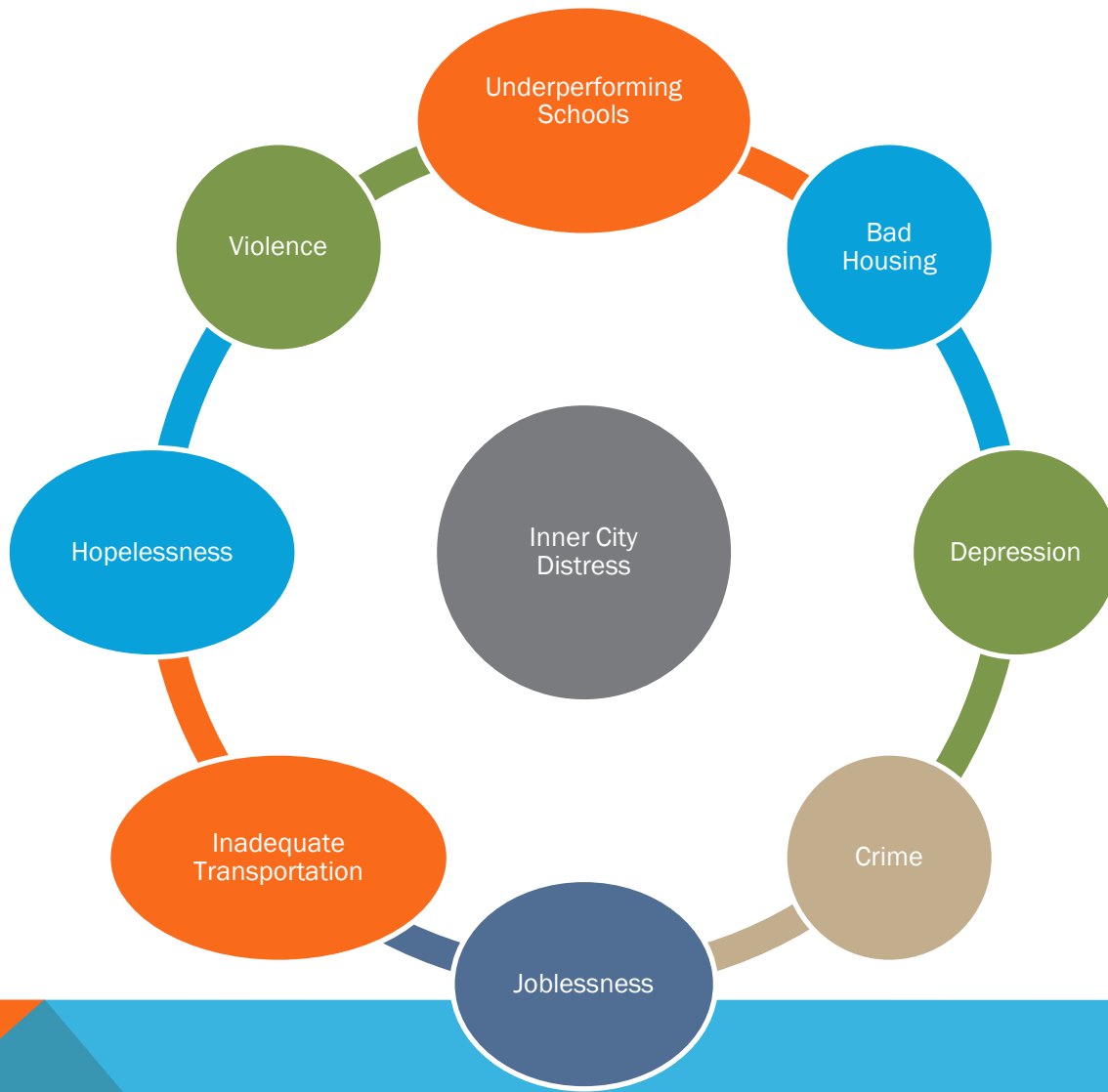


73% Rest of the United States

Location of Anchor Institutions (Eds & Meds)



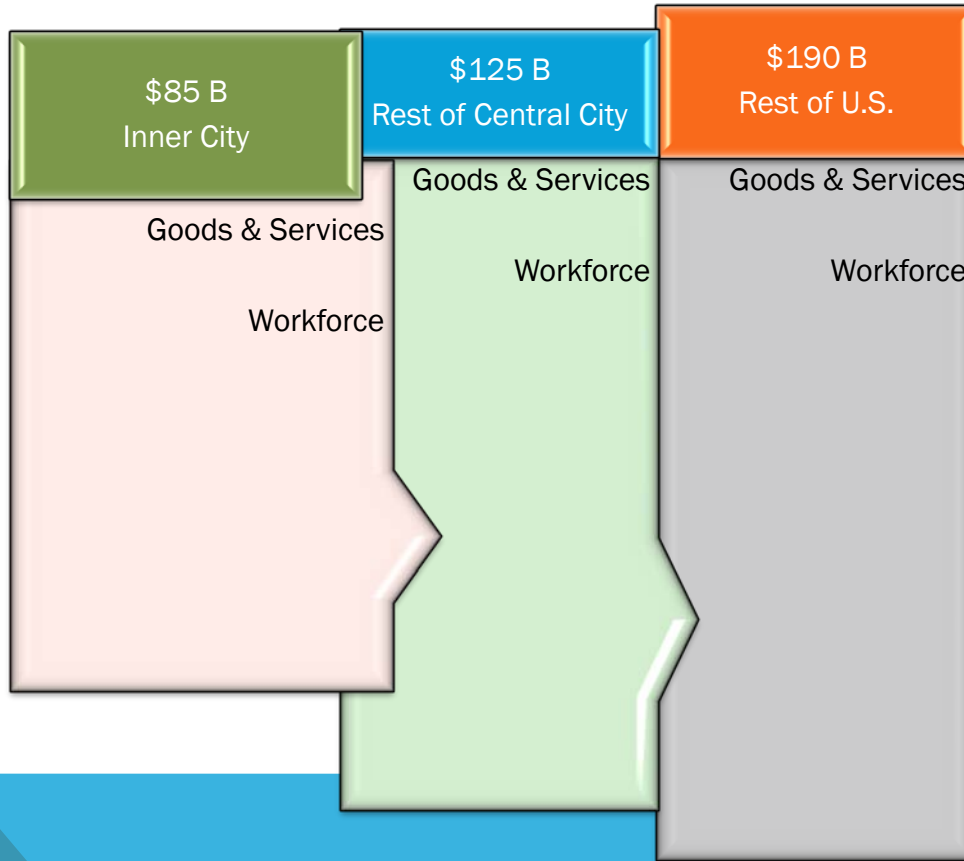
Anchor Institutions are Potential Engines of Community
and Economic Vitality for Distressed Neighborhoods &
Central Cities



The Distressed Inner City Neighborhood Problem



College & University Expenditures (2008)





Can we harness this Substantial Economic Activity and Focus it on Inner City Development?

The University & Community: Planning & Working Together

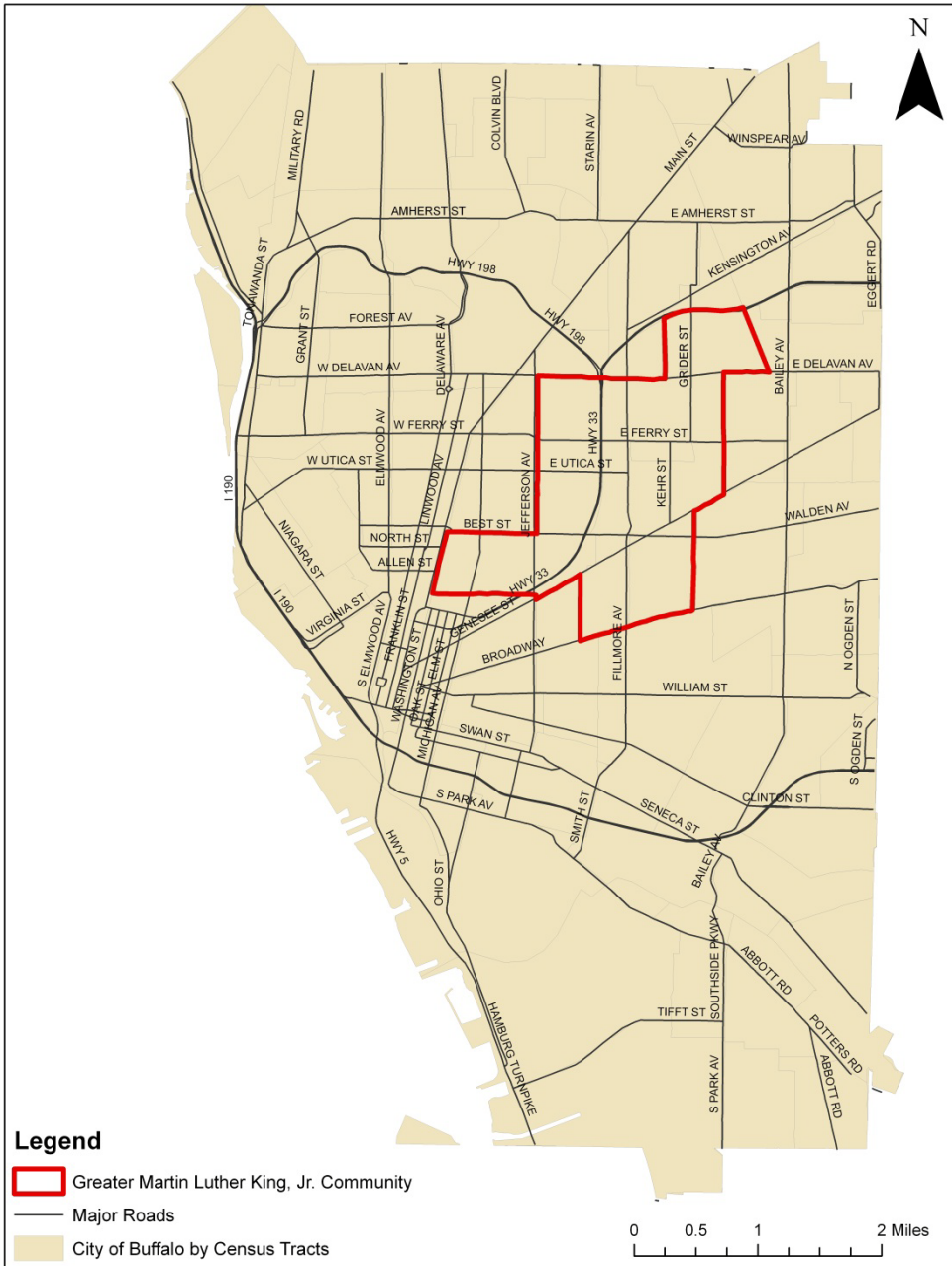




**Rebuilding their
Lives as They
Rebuild Their
Community...**

Part Two: Developing a Neighborhood Focus

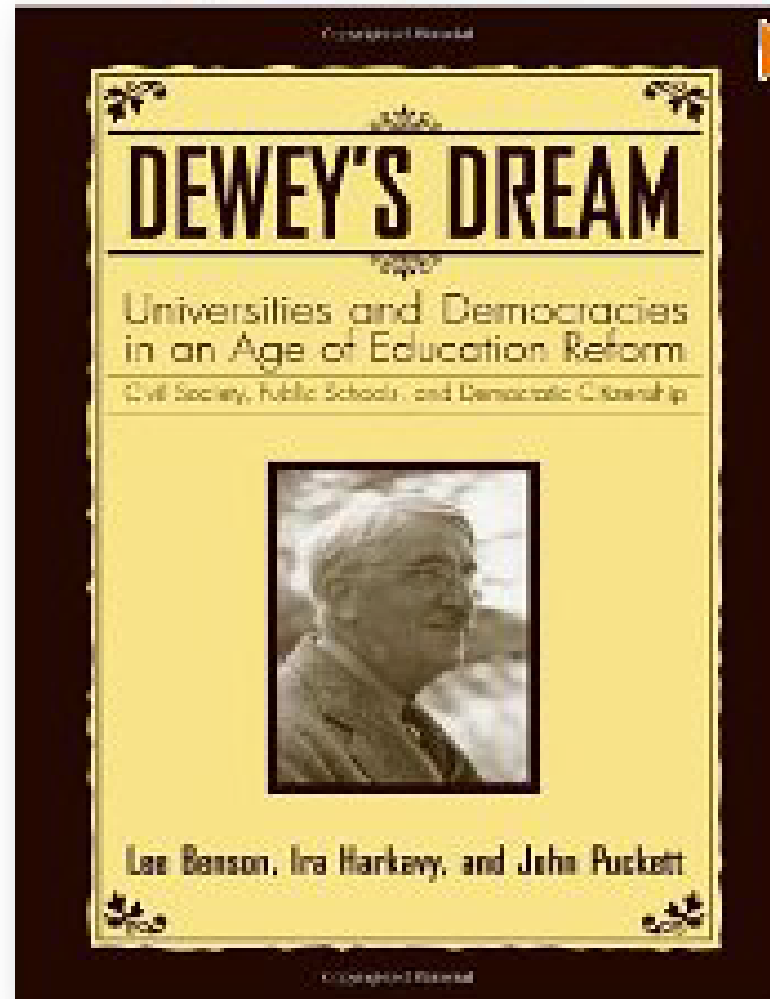
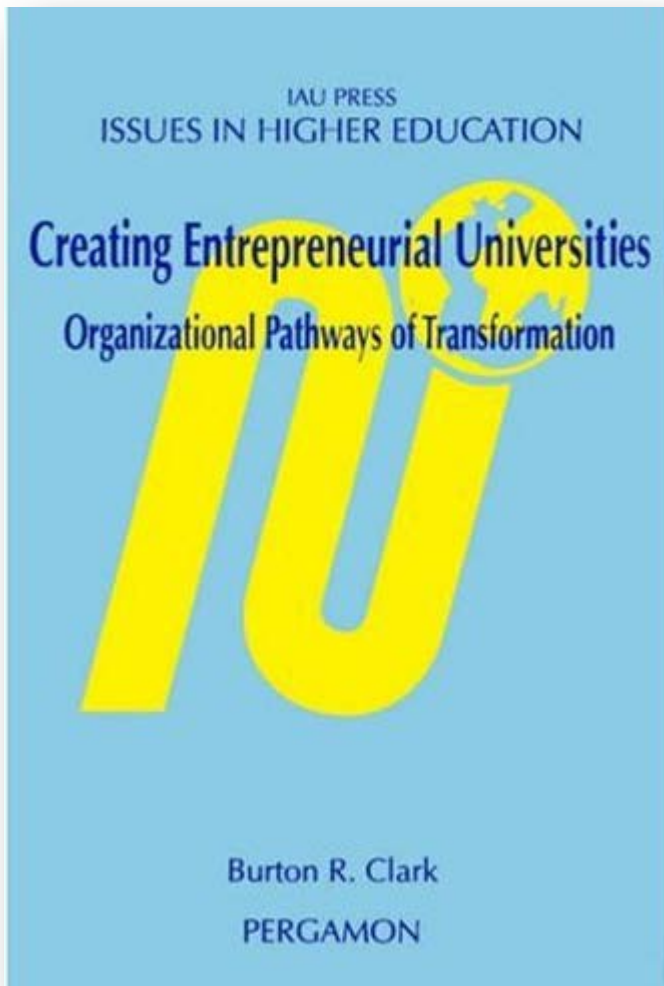




Develop a Specific Geographic Focus

Part Three: The Entrepreneurial University





The End