

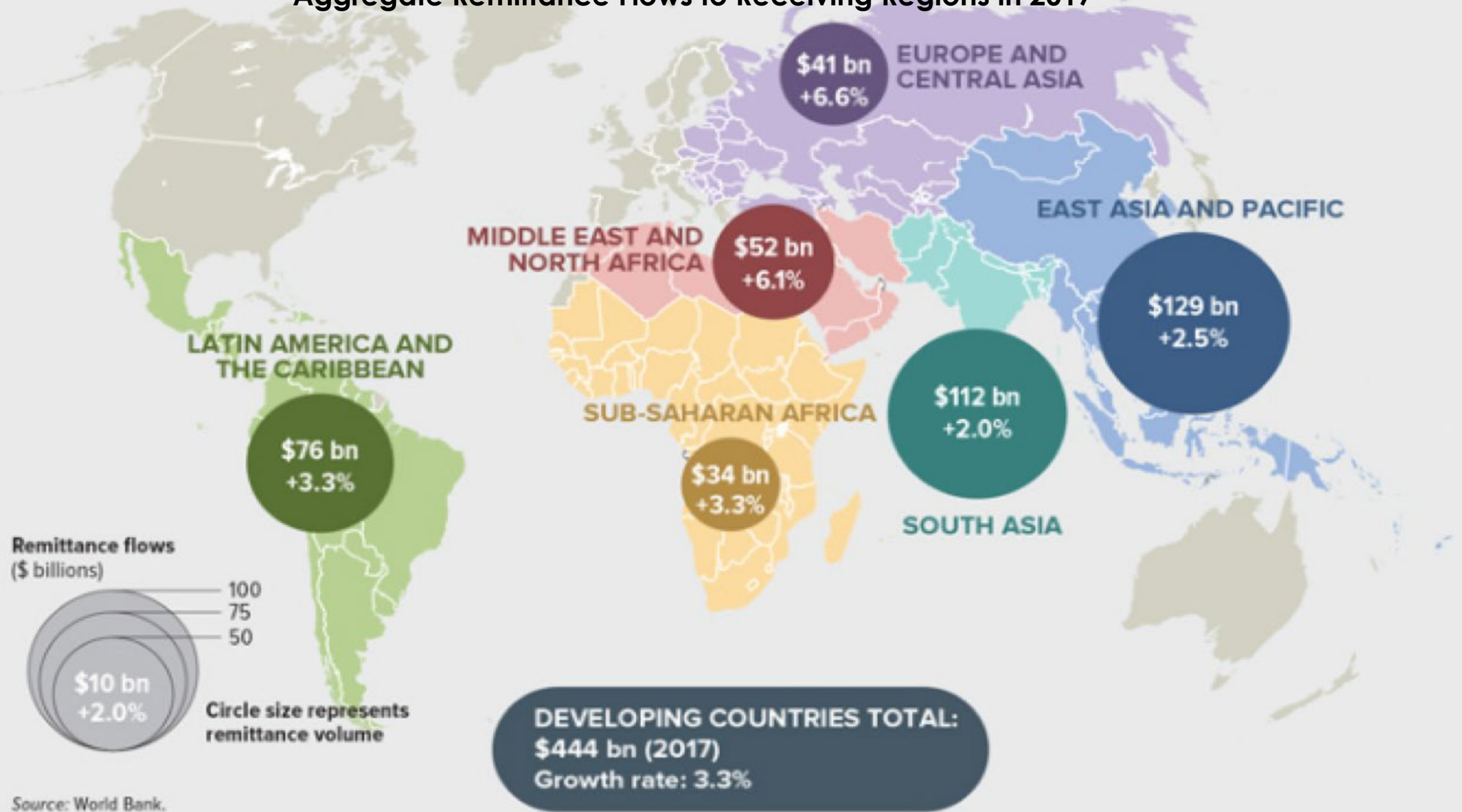


TRANSNATIONAL LINKAGES
OF MIGRATION:
REEXAMINING THE DETERMINANTS
OF REMITTANCE FLOWS

SUKANYA ROY

HONORS PROGRAM IN INTERNATIONAL RELATIONS
THE WATSON INSTITUTE FOR INTERNATIONAL AND PUBLIC AFFAIRS

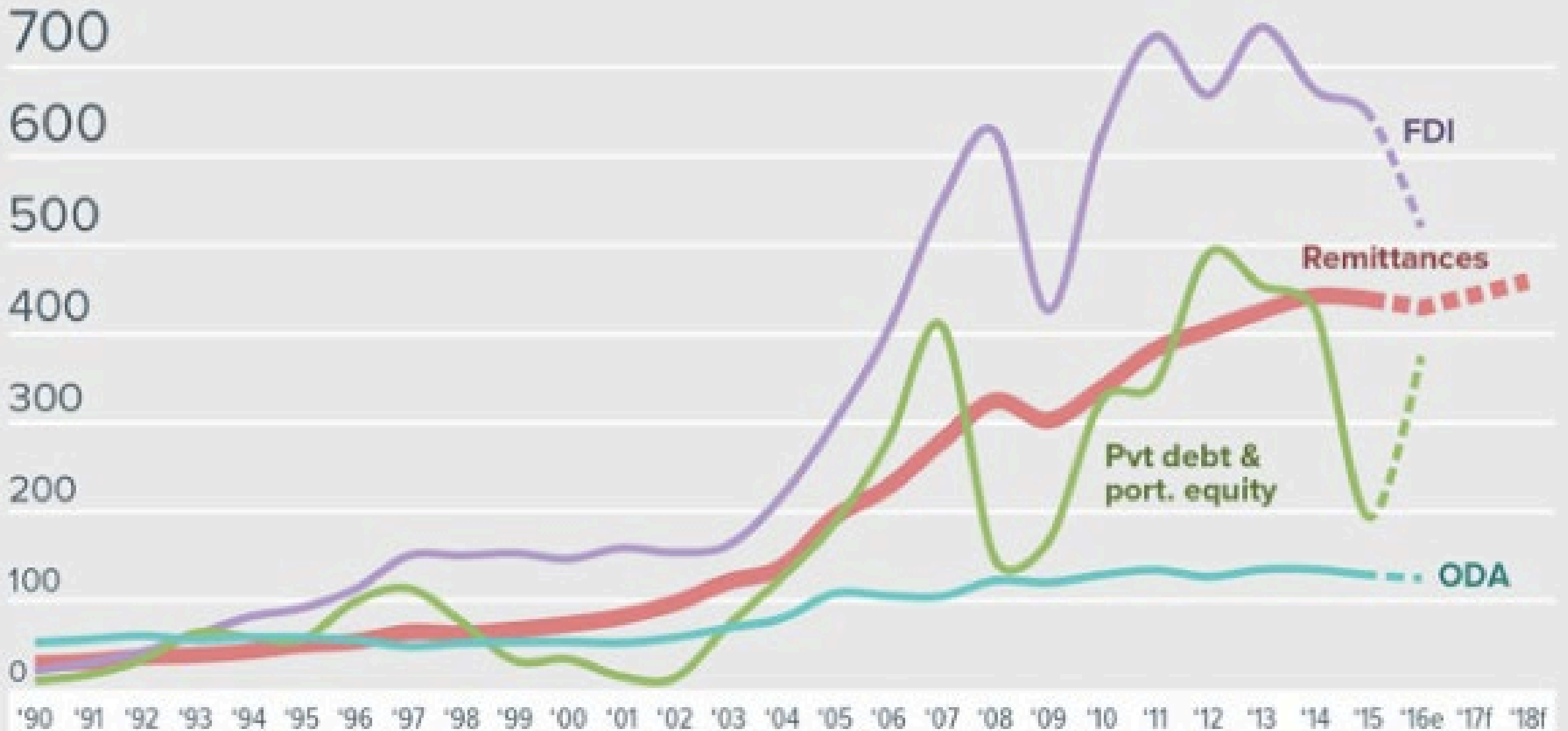
Aggregate Remittance Flows to Receiving Regions in 2017





\$800 billion

Resilience of Remittances Compared to Other Financial Flows, 1990-2017





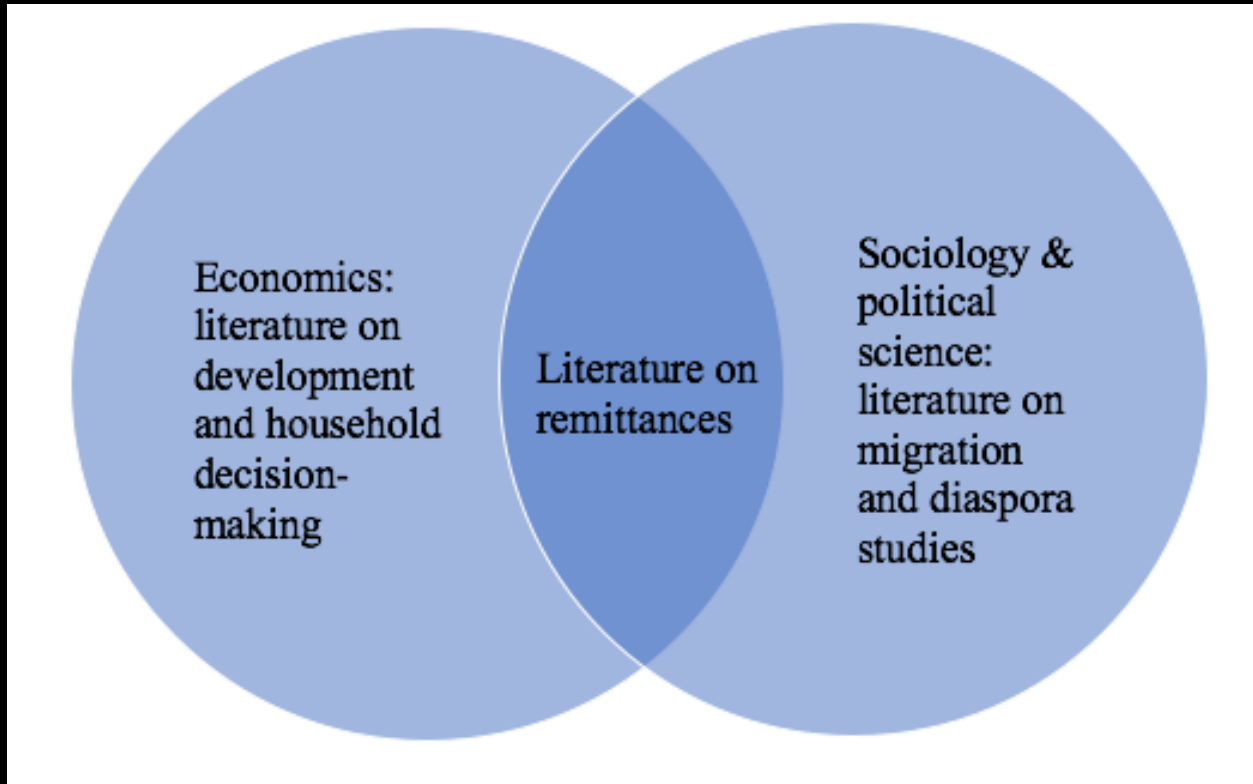
RESEARCH PUZZLE

- Geographic proximity?
- Differing constraints on mobility?

RESEARCH QUESTION

What factors influence remittance-sending behavior?
Specifically, how do migrants' **destinations** influence their decisions about remittance-sending?

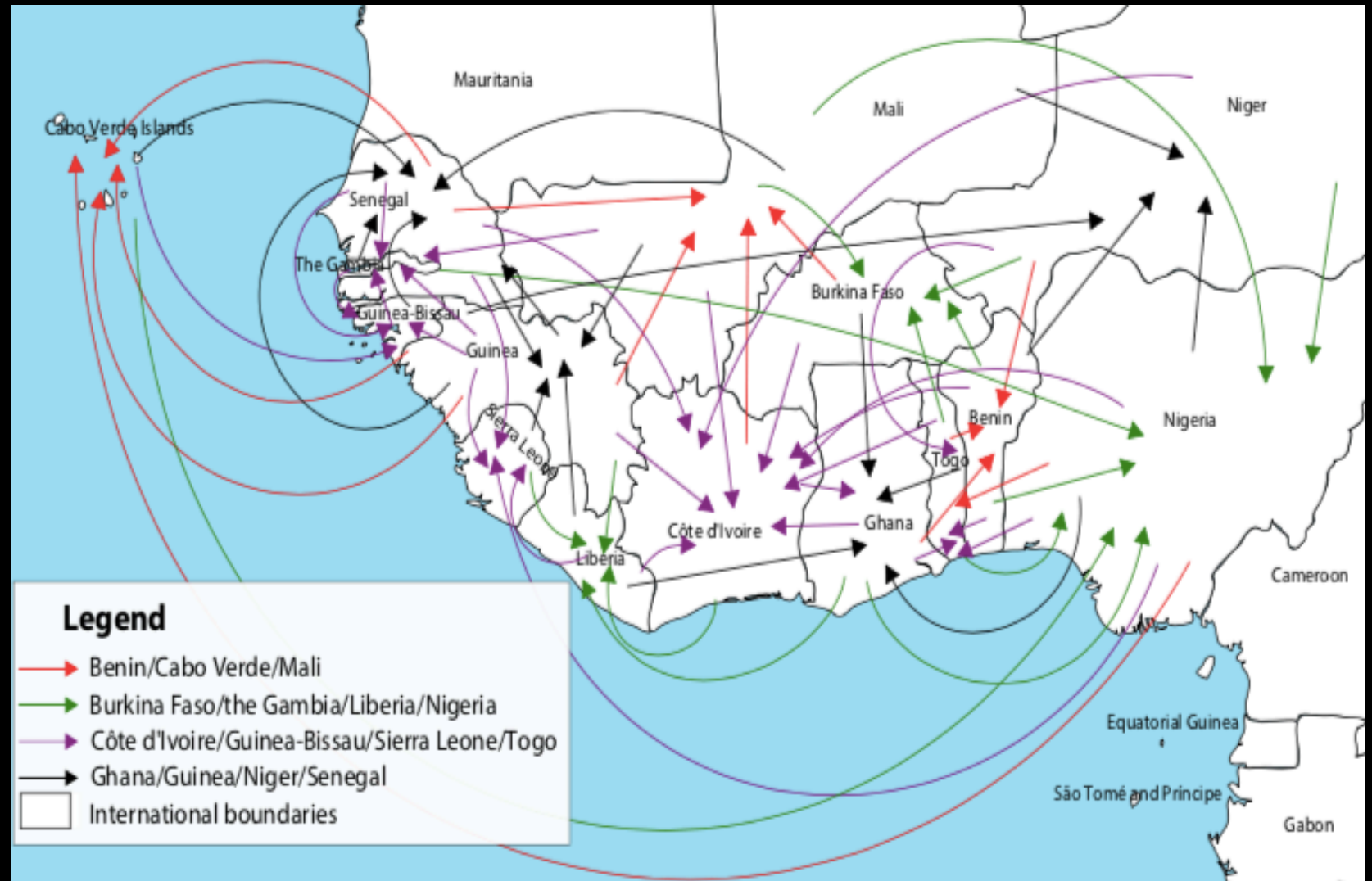
EXISTING APPROACHES / MY APPROACH



- New Economics of Labor Migration (NELM)
- Existing analyses of remittances:
 - Aggregate vs household-level
 - Internal vs. international
- **My contribution:**
 - Accounts for influence of migrant selection
 - Examines regional remittances

CASE SELECTION

- Comparative case study of Burkina Faso and Senegal
- Both members of Economic Community of West African States (ECOWAS)
- Within-case variation among major migration corridors
- Data richness



RESEARCH DESIGN

Qualitative

- Comparative case study of two ECOWAS member states
- Content analysis of major migration policy agreements governing relevant migration corridors

Quantitative

- Statistical analysis of 2010-2011 Migration and Remittances Household Surveys
 - Multinomial logistic regression of migration outcomes
 - Heckman selection model of remittance-sending

FINDINGS

- Location matters!
- International remittances: more frequent, more money sent, through formal rather than informal channels
- Decision **how much** to remit not necessarily contingent on decision **whether** to remit
- Effects of migrant selection do not necessarily hold for remitting

Average Annual Amounts Remitted by Migrants (USD)

Burkina Faso Senegal

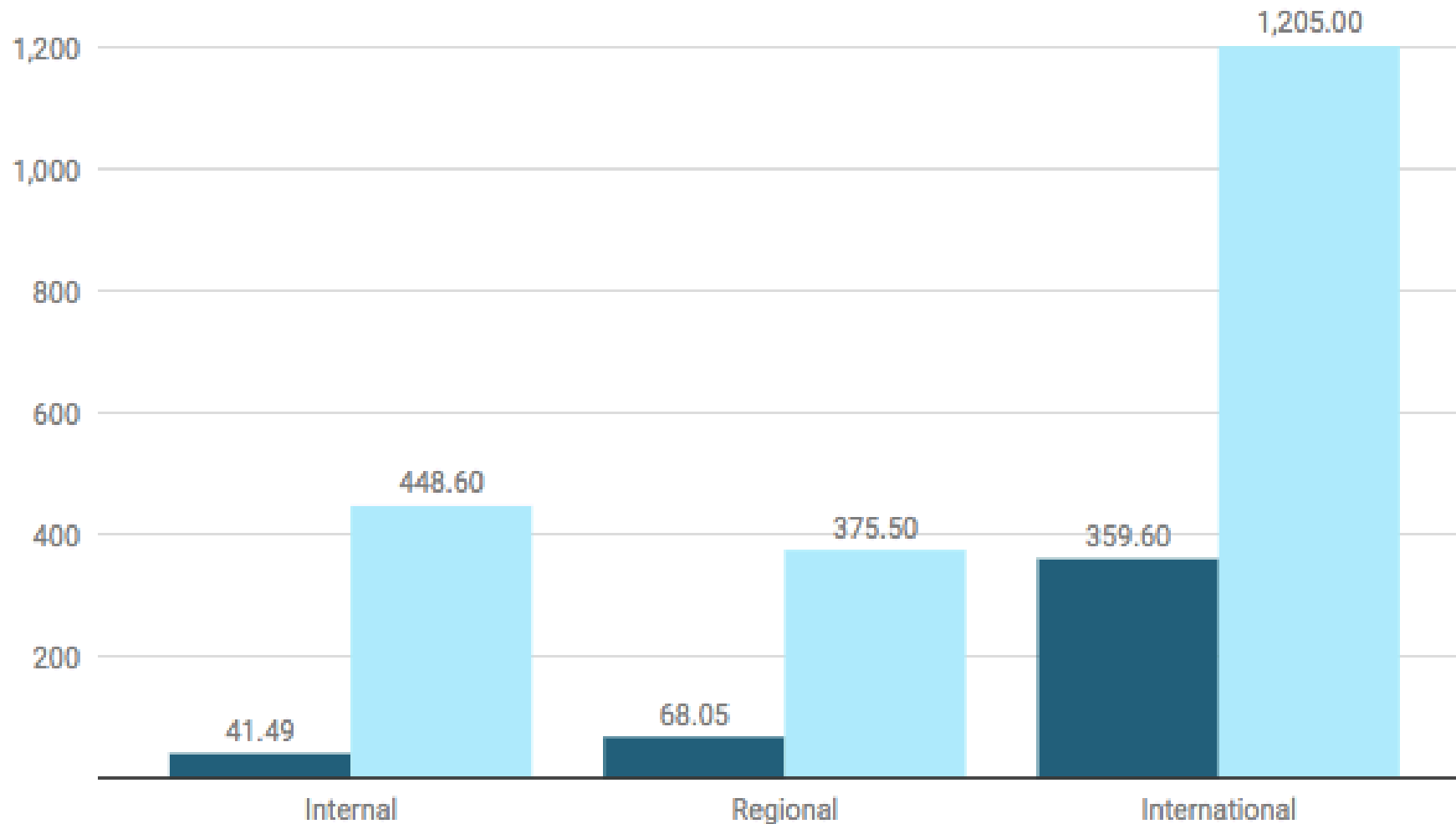


Chart: Sukanya Roy • Source: World Bank Migration and Remittances Household Surveys • Get the data • Created with Datawrapper



IMPLICATIONS

Theory:

- Refine New Economics of Labor Migration (NELM) approach
- Connect literature on migrant selection to remitting

Policy:

- Reduce costs of remittance transfers
- Collect more robust data on migration and remittances

Future research:

- Longitudinal analyses of remittance-sending
- Patterns of remitting in other geographic corridors